



2018

Updated: Jan. 2, 2018

SUMMARY OF QUALIFICATIONS

KHS&S CONTRACTORS





ORGANIZATIONAL INFORMATION



COLUMBIA STATE COMMUNITY COLLEGE

Company Name: Keenan Hopkins Schmidt & Stowell Contractors, Inc.
dba KHS&S Contractors

Date of Incorporation: December 7, 1984
Organization Type: Subchapter S Corporation
SIC Code: 1742

PRINCIPALS

Mark A. Keenan

Chairman
Year Joined KHS&S: 1985
Years of Experience: 43

Michael R. Cannon

President
Year Joined KHS&S: 1991
Years of Experience: 40

Michael Carrigan

Senior Vice President
Year Joined KHS&S: 2002
Years of Experience: 37

Neal W. Harris, Jr.

Senior Vice President
Year Joined KHS&S: 1995
Years of Experience: 22

Ted H. Malone

Senior Vice President
Year Joined KHS&S: 1993
Years of Experience: 38

Richard J. Pollicino

Senior Vice President
Year Joined KHS&S: 2002
Years of Experience: 24

Daniel F. Casey, Jr.

Senior Vice President
Year Joined KHS&S: 2002
Years of Experience: 39

Tony L. Hemgesberg

Senior Vice President
Year Joined KHS&S: 1985
Years of Experience: 33

Robert J. McCarthy

Senior Vice President
Year Joined KHS&S: 1995
Years of Experience: 23

Jess Robinson

Vice President
Year Joined KHS&S: 2002
Years of Experience: 23

Rob Evans

Vice President
Year Joined KHS&S: 2001
Years of Experience: 17

Robert Luker

Senior Vice President
Year Joined KHS&S: 2001
Years of Experience: 38

Thomas D. Pickford

Senior Vice President
Year Joined KHS&S: 2001
Years of Experience: 28

Erik Santiago

Senior Vice President
Year Joined KHS&S: 1995
Years of Experience: 23

Thomas J. Gibbons

Senior Vice President
Year Joined KHS&S: 1988
Years of Experience: 30

Lynda Licht

Chief Financial Officer
Year Joined KHS&S: 2000
Years of Experience: 31

Matthew Pollard

Senior Vice President
Year Joined KHS&S: 2003
Years of Experience: 24

Angela Sechrest

Vice President
Year Joined KHS&S: 2002
Years of Experience: 19

2018 SUMMARY OF QUALIFICATIONS

KHS&S HAS COMPLETED **3,500+ PROJECTS**





OFFICE LOCATIONS



KEENAN HOPKINS SCHMIDT & STOWELL CONTRACTORS, INC.

KEENAN HOPKINS SUDER & STOWELL CONTRACTORS, INC.

TAMPA FL

5422 Bay Center Drive
Suite 200
Tampa, FL 33609
P (813) 628-9330
F (813) 628-4339

NASHVILLE TN

205 Powell Place
Brentwood, TN 37027
P (615) 312-8200
F (615) 312-8201

ANAHEIM CA

5109 E. LaPalma Ave.
Suite A
Anaheim, CA 92807-2057
P (714) 695-3670
F (714) 695-3671

RENO NV

8565 Double R Boulevard
Reno, NV 89511
P (775) 322-2155
F (775) 322-9742

ORLANDO FL

4390 35th Street
Orlando, FL 32811
P (407) 425-5550

KHS&S Contractors of New Jersey, Inc.

ATLANTIC CITY NJ

720 California Avenue
Absecon, NJ 08201
P (609) 569-9970
F (609) 569-9971

CONCORD CA

2500 Dean Leshner Drive
Suite B
Concord, CA 94520-5317
P (925) 677-0828
F (925) 677-0847

SAN DIEGO CA

2110 Enterprise Street
Escondido, CA 92029
P (760) 705-3900
F (760) 705-3940

FORT LAUDERDALE FL

600 S. Andrews Avenue
Pompano Beach, FL 33069
P (954) 792-2427
F (954) 792-2624

SEATTLE WA

22614 66th Avenue South
Suite 105
Kent, WA 98032
P (253) 922-3445
F (253) 922-3368

DALLAS TX

1909 10th Street
Suite 500
Plano, TX 75074
P (972) 272-1548
F (972) 276-2991

DENVER CO

720 Corporate Circle
Suite G
Golden, CO 80401
P (720) 361-2600
F (702) 924-3080

LAS VEGAS NV

6680 Amelia Earhart Ct.
Las Vegas, NV 89119
P (702) 597-3200
F (702) 597-3350



LICENSING & SCOPE



VOLCANO BAY, UNIVERSAL STUDIOS FLORIDA

CONTRACTOR LICENSES

License Type: General Contractor

State	License	Expiration Date
Alabama	43900	31 MAR 2018
Arkansas	0135050417	30 APR 2018
Florida	CGC 1506912	31 AUG 2018
Iowa	C113939	29 JUN 2018
Louisiana	29106	02 MAY 2018
Mississippi	09801-MC	08 APR 2018
New Mexico	350340	31 DEC 2018
Tennessee	00047950	30 NOV 2018
Virginia	2705 060680A	31 JAN 2018

Scope of Work

Interiors/Exteriors

- 05400 – Cold Formed Metal Framing
- 06100 – Rough Carpentry
- 06200 – Exterior Finish Carpentry
- 07210 – Building Insulation
(In our work only)
- 07240 – Exterior Insulation and Finish
Systems (EIFS)
- 09205 – Furring and Lathing
- 09210 – Gypsum Plaster
- 09220 – Portland Cement Plaster
- 09255 – Gypsum Drywall
- 09260 – Gypsum Wallboard Systems
- 09262 – Gypsum Sheathing
- 09263 – Gypsum Board Shaft-Wall
Assemblies
- 09265 – Finishing of Gypsum Board

Concrete Restoration

- 03900 – Concrete Restoration
- 03910 – Concrete Cleaning
- 03920 – Concrete Resurfacing
- 03930 – Concrete Rehabilitation

Scope of Work

Themed Construction

- Show Design, Fabrication & Installation Management
- Faux Finishes, Paint and Aging
- Sculpting and Ornamentation
- Rendered and Character Plaster
- Finish Carpentry
- GFRC, GFRG, FRP
- Millwork and Casework
- Ornamental Metal
- Custom Doors and Windows
- Character Signage

Water Feature and Rockwork Technology

- Fountains
- Caves and Caverns
- Streams and Ponds
- Animated and Stationary Sculptures
- Waterfalls
- Natural and Artificial Rockwork Structures
- Choreographed Water Shows
- Special Effects, including Lighting, Audio Systems,
Fog and Pyrotechnics
- Geysers

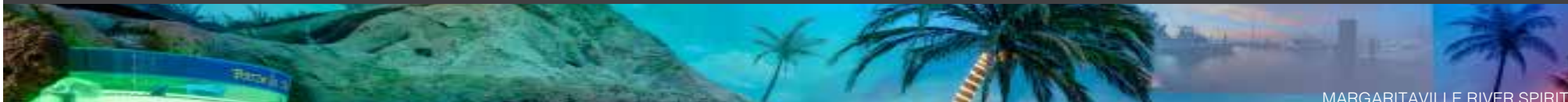
2018 SUMMARY OF QUALIFICATIONS

KHS&S HAS RECEIVED NEARLY **100 AWARDS** FOR EXCELLENCE IN CONSTRUCTION





FINANCIALS



MARGARITAVILLE RIVER SPIRIT

FINANCIAL INFORMATION

Banking

Bank Contact

SunTrust Bank

401 East Jackson Street, 10th Floor
Tampa, FL 33602

Pamela J. Snyder, Senior Vice President

P (813) 224-2808

F (813) 209-9643

pamela.snyder@suntrust.com

Dun and Bradstreet Number

13-195-7722

Dun and Bradstreet Rating

4A2

Cage (Commercial & Gov't. Entity) Number

3BHM6

Federal Tax ID Number

59-247-1479

Workers Comp Risk I.D. Number

918037993

Auditing CPA

B2D Semago

5407 Boran Place

Tampa, Florida 33610

P (813) 229-6300

F (813) 229-0088

Bonding

Single Bonding Capacity: \$50,000,000

Aggregate Bonding Capacity: \$200,000,000

A.M. Best Rating of A, XV

Arch Insurance Group

3 parkway, 1601 Cherry Street, Suite 150
Philadelphia, PA 19102

Contact: Frank J. Librera

P (215) 606-1618

F (866) 637-5861

E flibrera@archinsurance.com

Bowen, Miclette & Britt of Florida, LLC

1715 N. Westshore Blvd, Suite 920

Tampa, FL 33607

Contact: James Congelio

P (813) 282-1938 **F** (813) 282-1940

E jcongeliosr@bmbinc.com

Insurance

Willis Towers Watson of Florida

4211 West Boy Scout Boulevard, Suite 1000

Tampa, FL 33607

Contact: Paula Delage

P (813) 490-5164

F (813) 281-2234

E paula.delage@willistowerswatson.com

2018 SUMMARY OF QUALIFICATIONS

KHS&S IS THE 1ST INTERIOR/EXTERIOR CONTRACTOR IN THE U.S. TO OFFER **COMPREHENSIVE, IN-HOUSE PRECONSTRUCTION SERVICES**





YAK & YETI RESTAURANT

SAFETY PROGRAM

KHS&S has one of the best safety records in the industry.

Contributing to this record is a multi-prong approach that incorporates employee-based safety committees, education, training and employee involvement through the use of suggestions and incentives.

THE KHS&S SAFETY PROGRAM

- ✓ Safety orientation
- ✓ New hire orientation
- ✓ Toolbox safety meetings
- ✓ Hazard communication statement
- ✓ Supervisor safety training
- ✓ On-site safety inspections
- ✓ Written safety procedures
- ✓ Hazard communication program
- ✓ Drug-free workplace

OSHA DATA

	FORM 300 2012	FORM 300 2013	FORM 300 2014	FORM 300 2015	FORM 300 2016
CASES WITH DAYS AWAY FROM WORK	4	2	2	1	1
CASES WITH JOB TRANSFER OR RESTRICTION	9	7	9	7	7
OTHER RECORDABLE CASES	20	9	9	9	4
FATALITIES	0	0	0	0	0
OSHA RECORDABLE RATE	7.48	4.74	5.23	4.71	3.34
OSHA DART RATE	2.95	2.37	2.36	2.22	2.23
OSHA LOST TIME INCIDENT RATE	0.91	0.53	0.52	0.28	0.28
EMPLOYEE HOURS WORKED	882,060	759,454	764,296	721,473	717,917

EMR DATA

YEAR	RATE
2009	0.77
2010	0.87
2011	1.03
2012	0.94
2013	0.91
2014	0.87
2015	0.89
2016	0.94
2017	0.89



GAYLORD PALMS RESORT

POLICIES AND PROCEDURES

1. Does your company have a pre-hire alcohol/illegal substance screening program and a post-accident alcohol / illegal substance testing policy?

<i>Pre-Hire</i>		<i>Post-Accident</i>	
✓Yes	No	✓Yes	No

2. How frequently does your company conduct field inspections to determine safety compliance?

✓ Weekly
 ✓ Other: Bi-weekly on some fast-paced projects

Inspections are conducted by the following:

✓ Company Safety Rep.
 ✓ Supervisor/Foreman/Lead
 ✓ Other: Insurance rep on the job site monthly

3. Does your company have a written safety and health program? ✓Yes No

4. Are safety goals developed and communicated? ✓Yes No

5. Does your company hold separate meetings specifically to address safety issues? ✓Yes No

Personal attending these meetings include:

Project superintendent; job site safety coordinator; KHS&S safety director; project foreman; KHS&S safety committee members.

6. Do you conduct a pre-project hazard analysis? ✓Yes No

7. Do your work crews conduct daily safety meetings before the start of each shift/job? ✓Yes No

8. Does your company conduct a separate safety orientation for new employees? (Also available in Spanish) ✓Yes No

9. Does your company provide safety training classes for your employees? ✓Yes No

10. Does your company document employee specialty certifications for specific trades, equipment or job functions? ✓Yes No

Powered Forklift, Boom Lift, Scissor Lift, Pin Gun Training (Hilti, Ramset, Powers), Harness Training, Scaffold Awareness, CPR, First Aid

11. Does your company have an employee safety incentive program? ✓Yes No

12. Does your company conduct accident and incident investigations, which identify root causes? ✓Yes No

13. Are completed accident/incident reports distributed to management? ✓Yes No

14. Do reports include near-miss incidents? ✓Yes No

15. Does your company conduct valid driver's license record verification on all employees required to operate a company vehicle on the job? ✓Yes No

16. Are your employees required to complete OSHA construction safety course(s)?

OSHA 10 Hour ✓Yes No

OSHA 10 Hour (Spanish) ✓Yes No

OSHA 30 Hour ✓Yes No

OSHA 500 Yes ✓No

OSHA 501 Yes ✓No

REFERENCES



SANDEARL RESORT

REFERENCES

Trade References

Daico Supply Company

1084 W. Jackson Road
Carrollton, TX 75006

P (972) 245-6000

F (972) 245-5852

Contact: Jan Hart

E jan@daicosupply.com

Kobrin Builders Supply

1924 West Princeton Street
Orlando, FL 32804

P (407) 843-1000

F (407) 649-8600

Contact: Chris Cellela

E ccellela@kobrinbuilderssupply.com

Grabber – Tampa

5835 Barry Road
Tampa, FL 33634

P (813) 249-2281

F (813) 249-6215

Contact: Robi Beckwith

E rbeckwith@grabberman.com

Contractor References

Hensel Phelps Construction

6557 Hazeltine Drive, Suite One
Orlando, FL 32822

P (407) 856-2400

Contact: Bryan Butcher

E bbutcher@henselphelps.com

Skanska USA Building - Nashville

5000 Meridian Blvd.
Franklin, TN 37067

P (276) 781-7822

F (615) 771-7960

Contact: Jeff Elpers

E jeff.elpers@skanska.com

Coastal / Tishman, A Joint Venture

5959 Blue Lagoon Dr., Ste. 200
Miami, FL 33126

P (305) 559-4900

Contact: Kevin Davis

E kevin.davis@

coastalconstruction.com

JE Dunn Construction

12 Cadillac Drive, Suite 100
Brentwood, TN 37027

P (615) 726-1111

F (615) 377-3665

Contact: Brandon Moore

E brandon.moore@jedunn.com

Turner Construction Company

5323 Millenia Lakes Blvd, Ste. 160
Orlando, FL 32839

P (407) 370-4500

C (407) 402-2806

Contact: Chuck Brandt, Project Exec.

E cbrandt@tcco.com

Manhattan Construction Company

6300 North Central Expressway
Dallas, TX 75206

P (214) 357-7400

F (214) 357-7789

Contact: Greg McClure

E gmclure@manhattanconstruction.com

Barton Malow Company

5337 Millenia Lakes Blvd., Suite 235
Orlando, FL 32839

P (407) 352-8880

F (407) 352-8660

Contact: Wayne Wright, Project Director

E wayne.wright@bartonmalow.com

Austin Commercial

450 South Orange Ave., Suite 150
Orlando, FL 32801

P (407) 459-1345

Contact: Steve Rivers

E srivers@austin-ind.com

Suffolk Construction Company

Mark Hughes, General Superintendent
One Biscayne Tower, Suite #2700
2 South Biscayne Boulevard
Miami, FL 33131

P (305) 459-4748

C (786) 510-3029

E mhughes@suffolkconstruction.com

Industry Involvement

ABC Associated Builders and Contractors

AWCI Association of the Wall & Ceiling
Industries International

EIMA EIFS Industry Members Association

FWCCA Florida Wall & Ceiling Contractors
Association

IAAPA International Association of
Amusement Parks and Attractions

TEA Themed Entertainment Association

USGBC U.S. Green Building Council



SEMINOLE HARD ROCK CAFE

MAJOR PROJECTS

MAJOR PROJECTS IN PROGRESS (GROUPED BY CONTRACT AMOUNT)

PROJECT NAME	OWNER	GC/EMPLOYER	ARCHITECT	% COMPLETE	COMPLETION
\$ 1.0 - \$ 4.99 MILLION					
McReynolds - Dallas	McReynolds	Sebastian Const. Group	DC Broadstone II Architect	90%	January 2018
Pinellas County Jail	Pinellas County CC	Moss & Associates	Moss & Associates	75%	February 2018
Restoration Hardware Nashville	Restoration Hardware	DPR Construction, ATL	Hobbs & Black Architects	65%	March 2018
St. Anthony's Hospital Expansion	St. Anthony's Hospital	Barton Malow	Gresham Smith & Partners	20%	May 2018
SKYLOFT, Austin, TX	Johnson Trube	JE Dunn Construction	Mark Hart Architecture/STG Design	45%	June 2018
The Harvard, Dallas	Street Light Residential	KHS&S	LRK	35%	September 2018
St David's EP Lab & Nursing Units, Austin	HCA	JE Dunn Construction	Perkins + Will	1%	May 2019
\$ 5.0 - \$ 9.99 MILLION					
Disney's Coronado Springs Resort, Orlando	Walt Disney World Resort	Gilbane Building Co.	Baker Barrios	50%	April 2018
Seminole Hard Rock Lowrise Expansion	Seminole Tribe of FL	Suffolk Construction	Klai Juba Wald Architects	20%	January 2019
Florida Hosp. Winter Park N. Patient Pavilion	AHS/Sunbelt dba FL Hos,	Brasfield & Gorrie	RFL	5%	February 2019
Omni Barton Creek Resort Expansion, Austin	Omni Hotels & Resorts	The Beck Group	The Beck Group	1%	June 2019
MORE THAN \$10,000,000					
Fort Lauderdale Airport 4Gate Replacement	Broward County	James A. Cummings	PGAL	95%	February 2018
TIA Conrac and APM, Tampa	HC Aviation Authority	Austin Commercial	Gresham, Smith & Partners	95%	January 2018
NBC Telemundo Expansion - Miami	Telemundo/NBCU	Turner Construction	RLC Architects	95%	January 2018
Seminole Hard Rock So FLA Meeting Rooms	Seminole Tribe of FL	Suffolk-Yates, JV	Klai Juba Wald	60%	April 2018
All Aboard Florida MiamiCentral	Brightline	Suffolk Construction	SOM	45%	June 2018

2018 SUMMARY OF QUALIFICATIONS

KHS&S HAS COMPLETED **MORE THAN 50 PROJECTS** USING BIM

Updated: Jan. 2, 2018





THE CASINO AT DANIA BEACH, FLORIDA

MAJOR PROJECTS

MAJOR COMPLETED PROJECTS 2006 - PRESENT (GROUPED BY CONTRACT AMOUNT)

PROJECT NAME	OWNER	GC/EMPLOYER	ARCHITECT	COMPLETION
MORE THAN \$10 MILLION				
Disney Springs	Walt Disney Company	PCL Construction	VOA	2016
Baha Mar, Exteriors	Baha Mar Ltd.	China State Construction	Mike Hong Architects	2016
Harry Potter Diagon Alley	Universal Studios Florida	PCL Construction	Universal Studios Florida	2014
Borgata Tower Renovations	Marina District Develop.	KHS&S Contractors	Cope Linder Architects	2013
Akwesasne Mohawk Casino	St. Regis Mohawk Tribe	Encompass Development	Genesis	2013
L'Auberge Baton Rouge	Pinnacle Entertainment	Manhattan Construction	Marnell Architecture	2012
Nemours Children's Hospital	Nemours Health System	Skanska USA Building	Stanley Beaman & Sears	2012
Bay Lake Tower at Contemporary Suites	JSRM, Inc.	Hardin Construction	Glover, Smith, Bode, Inc.	2009
Gulf Coast Medical Center	Lee Memorial Health	Skanska USA Building	Perkins + Will	2009
Emerald Grande at Harborwalk Village	Legendary, Inc.	Moss Anderson	HHCO Design Int'l	2008
Buffalo Thunder Resort	Pueblo of Pojoaque	Balfour Beatty	Thalden-Boyd	2008
Seminole Hard Rock Tampa	Seminole Tribe of Florida	WG Yates	HKS, Inc.	2007
The Sandpearl Resort	JMC Communities	Hensel Phelps	Adache Group Architects	2007
Saratoga Springs Resort Phase III	Disney Development	Hardin Construction Company	Walt Disney Imagineering	2007
Shops at Coconut Point	Simon Properties Group	VCC	Wakefield Beasley & Associates	2006
IP Hotel & Casino	Imperial Palace Casino	Roy Anderson Corp.	Friedmutter Group	2006
\$ 5.0 - \$ 9.99 MILLION				
Cabana Bay Beach Resort Exp. Orlando	Universal Parks & Resorts	Hensel Phelps	Lindsay Pope Brayfield Clifford	2017
Margaritaville River Spirit - Tulsa	Muscogee Creek Nation	Manhattan/Redstone	HKS, Inc.	2017
Florida Hospital Women's Pavilion	Florida Hospital	Brasfield & Gorrie	HKS, Inc.	2016
Baha Mar, Convention Center	Baha Mar Ltd.	China State Construction	Mike Hong Architects	2016
Margaritaville Beach Resort Hollywood	Coral Hosp./Lojeta Group	Coastal / Tishman JV	Adache Group Architects	2015
Disney Polynesian Village Resort Hotel	Disney Vacation Dvlpt. Inc.	Balfour Beatty	Walt Disney Imagineering	2015
University Medical Center, IP, Int/Ext	UMC Management	Skanska USA Building	Blicht / Knevel Architects	2015
University Medical Center, D & T, Int/Ext	UMC Management	Skanska USA Building	Blicht / Knevel Architects	2015

2018 SUMMARY OF QUALIFICATIONS

KHS&S HAS COMPLETED PROJECTS IN MORE THAN **20 STATES AND 8 COUNTRIES**



FLORIDA MALL DINING PAVILION

MAJOR PROJECTS

COMPLETED PROJECTS CONT.

PROJECT NAME	OWNER	GC/EMPLOYER	ARCHITECT	COMPLETION
--------------	-------	-------------	-----------	------------

\$ 5.0 - \$ 9.99 MILLION (CONT'D)

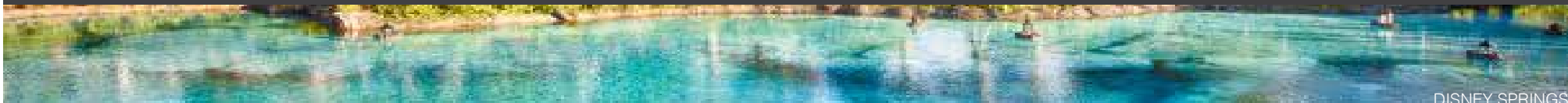
Golden Nugget Resort Casino	Golden Nugget Casinos	W.G. Yates & Sons	Bergman, Walls & Assoc.	2015
Baylor Stadium	Baylor Board of Regents	Austin Commercial-Flintco LLC	Populous	2014
UTSW (Major Teaching Hospital)	Confidential	Hunt Construction Group	RTKL	2014
Healthpark Medical Center Re-Skin	Lee Memorial Health	KHS&S Contractors	Ivy Group Consultants, Inc.	2013
Margaritaville Bossier City	Bossier Casino Venture	Roy Anderson Corp.	Cunningham Group	2013
Forest Park Medical Center Southlake	Neal Richards Group	Adolfson & Peterson	Ascension Group Architects	2013
Disney Little Mermaid Rockwork Exterior	Walt Disney Company	N/A	Walt Disney Imagineering	2012
Fantasyland, Phase II	Walt Disney Company	Hoar Construction	Walt Disney Imagineering	2012
Marlins Park	Florida Marlins	Hunt/Moss JV	Populous	2012
Coconut Creek Casino	Seminole Tribe of Florida	Moss/Anderson JV	Friedmutter Group	2012
Univ. of OK Cancer Institute	OU Board of Regents	Manhattan Construction Company	The Benham Companies	2011
Viera Hospital	Heath First	Lend Lease	Hunton Brady Architects	2011
Station Square	Station Square Clearwater	Biltmore Construction	Kip E. Daniel, Architect	2008
Winter Garden Village	The Sembler Company	Hardin Construction	The Sembler Company	2007
Homestead Hospital	Baptist Health South Fla.	Skanska USA Building	HKS, Inc.	2006
Marsh's Edge	Coastal Comm. Retirement	The Weitz Company	Cochran, Stephens & Donkervoet	2006
Gulfstream Clubhouse	GPRA, Inc.	Suitt Construction	BRPH Company-Engineers, Inc.	2006

\$ 1.0 - \$ 4.99 MILLION

Restoration Hardware West Palm Beach	Restoration Hard./Taubman	Whiting-Turner	Hobbs + Black Architects	2017
222 22nd Avenue, Nashville, TN	222 22nd Ave. LLC	JE Dunn	GS&P	2017
Project Pluto, Orlando, FL	Walt Disney Company	Whiting-Turner	Gensler	2017
Seminole Hard Rock Casino '16 Exp Tampa	Seminole Tribe of Florida	Roy Anderson	Klai Juba Wald	2017
Florida Aquarium Event Center, Tampa	Florida Aquarium	Cutler Associates	Gould Evans	2017
Vehicle Assembly Bld. Kennedy Space Ctr.	NASA / US Government	Hensel Phelps	Reynolds Smith & Hills, Inc.	2017
Joker Marchant Stadium Tiger Town Exp.	City of Lakeland	Barton Malow	HKS	2017
Planet Hollywood Transformation, Orlando	Earl Enterprises	PCL	Morris Achitects, Inc.	2017

2018 SUMMARY OF QUALIFICATIONS

KHS&S OFFERS PREFABRICATED BATHROOMS, EXTERIOR WALL PANELS, MEDICAL HEADWALLS, INTERIOR FRAMING, AND MULTI-TRADE PREFAB



DISNEY SPRINGS

MAJOR PROJECTS

COMPLETED PROJECTS CONT.

PROJECT NAME	OWNER	GC/EMPLOYER	ARCHITECT	COMPLETION
\$ 1.0 - \$ 4.99 MILLION (CONT'D 1)				
Florida Hosp. Tampa Womens/Child. Exp.	Florida Hospital	Barton Malow	HuntonBrady Architects	2017
SMU Fondren Library, Dallas	Southern Methodist Univ.	Vaughn Construction	GFF	2016
The Star Parking Garages, Dallas	Blue Star Land Lincoln Pro.	Manhattan Construction	O'Brien Architects	2016
Frozen Meet & Greet at Walt Disney World	Walt Disney Imagineering	Whiting-Turner Contracting Co.	Looney Ricks Kiss	2016
Columbia State Community College	Tenn. Board of Regents	Hoar Construction	Bauer Askew	2016
Disney Springs Rockwork	Walt Disney Company	PCL Construction	VOA	2016
I-275 FRP Panel Project	FL Dept. of Transportation	Skanska USA Building	Hoffman Architects	2016
Concho Commons Building	Transwestern	W.S. Bellows	RWA Architects	2016
St. David's Medical Center Austin	HCA	JE Dunn Construction	Perkins + Will	2016
Florida Mall Food Court	Florida Mall Assoc. Ltd.	VCC	Cuhaci & Peterson	2015
Westin Austin Plaster	White Lodging Services	Hunt Construction	HKS, Inc.	2015
Magic Kingdom Hub Hardscape	Walt Disney Imagineering	Hoar Construction	Perry Baker	2015
St. Leo Academic Building	St. Leo University	Creative Contractors	Gould Evans	2015
Williamson Medical Center	Williamson Medical Center	Skanska USA Building	Earl Swensson Associates	2015
Borgata Opus Suites Renovation	Marina District Dvlpt.	KHS&S	The Borgata	2015
University Medical Center, IP, Acoustical	UMC Management	Skanska USA Building	Blicht / Knevel Architects	2015
University Medical Center, D & T, Acoustical	UMC Management	Skanska USA Building	Blicht / Knevel Architects	2015
Forest Park Medical Center - Austin	Neal Richards Group	Adolfson & Peterson	Page Southerland Page	2015
Bausch & Lomb Tampa	Bausch & Lomb	Integrated Project Services	Integrated Project Services	2015
Cleveland Clinic NICU	Cleveland Clinic	Turner Construction	SOM	2015
Publix Distribution Center	Publix of Florida	Whiting-Turner	Leo A. Daly	2015
Kyle Field Renovation Plaster	Texas A & M	Manhattan Construction	Populous	2014
The Mall at University Town Center	Taubman & BDC, LLC	DCK/FWF LLC, UTC Mall	JRPA Architects	2014
St. Joseph's Heart Center	BayCare Health System	Barton Malow	Gresham, Smith & Partners (GS&P)	2014
Forest Park Medical Center - San Antonio	Neal Richards Group	Rogers-O'Brien Construction	BOKA Powell Architects	2014
J.W. Marriott Austin	White Lodging Services	Hunt Hardin Construction	HKS	2014

2018 SUMMARY OF QUALIFICATIONS

KHS&S HAS COMPLETED **60+ HOSPITAL PROJECTS** SINCE ITS FOUNDING IN 1984





AMALIE ARENA TRANSFORMATION

MAJOR PROJECTS

COMPLETED PROJECTS CONT.

PROJECT NAME	OWNER	GC/EMPLOYER	ARCHITECT	COMPLETION
--------------	-------	-------------	-----------	------------

\$ 1.0 - \$ 4.99 MILLION (CON'T 2)

Harbourside Jupiter	Allied Capital & Dvlpt. of SF	Moss & Associates	Leo A Daly	2014
Gulf Coast Medical Center	HCA	JE Dunn Construction	GS&P	2014
Manatee County Judicial Center Re-Skin	Manatee County	Balfour Beatty	HOK	2013
Tradition Medical Center	Martin Memorial Health	Balfour Beatty	HKS, Inc.	2013
Johnson City Medical Center, Surgery Add.	Mountain States Health	Skanska USA Building	HKS, Inc.	2013
Universal Studios 609	Universal Creative	PCL Construction	BRPH Architects & Engineers	2013
LDS Temple of Fort Lauderdale	LDS Church	Suffolk Construction	Architectural Nexus, Inc.	2013
Scores Atlantic City	Starlight Entertainment, LLC	Holt Construction Group	SOSH Architects	2013
Hialeah Park Casino	Hialeah Park Race Track	Link Construction	Ewing Cole	2013
Blake Medical Center, Exterior Re-Skin	HCA	Batten & Shaw, Inc.	Gould Turner Group	2013
SeaWorld 2013	SeaWorld of Florida, LLC	PCL Construction	PGAV	2013
Capital Regional Medical Center	HCA	Skanska USA Building	Gould Turner Group	2013
Magnolia Regional Health Center	Magnolia Regional Health	Robins & Morton	Earl Swensson Architects	2013
Paris Regional Medical Center	RegionalCare Hospital	Batten & Shaw, Inc.	HOK	2013
Wellington Regional Medical Center	Universal Health Services	Robins & Morton	HKS, Inc.	2012
George C. Young Federal Building	GSA	Skanska USA Building	DLR Group	2012
Winstar Casino Expansion	Chickasaw Development	Hill & Wilkinson	HBG Architects	2012
Forest Park Medical Center	Forest Park Medical Center	Balfour Beatty	Boka Powell	2012
Disney Little Mermaid Rockwork Interior	Walt Disney Company	N/A	Walt Disney Imagineering	2012
Disney Little Mermaid Interior Buildout	Walt Disney Company	Hoar Construction	Walt Disney Imagineering	2012
Smyth County Community Hospital	Mountain States Health	Skanska USA Building	Perkins + Will	2012
Tampa Times Forum Expansion	Tampa Sports Authority	Mortenson Construction	MCG Architecture	2011
St. Joseph's NICU Expansion	BayCare Health System	Barton Malow	HKS Architects	2011
Seminole Hard Rock Casino Garage/Bridge	Seminole Tribe of Florida	Kraft Construction	Klai Juba	2011
Orlando Int'l Airport Airside 1	Greater Orlando Aviation	Hensel Phelps	CT HSU & Assoc.	2010



THE BOATHOUSE AT DISNEY SPRINGS

MAJOR PROJECTS

COMPLETED PROJECTS CONT.

PROJECT NAME	OWNER	GC/EMPLOYER	ARCHITECT	COMPLETION
\$ 1.0 - \$ 4.99 MILLION (CON'T 3)				
Flagler Magic City Casino	Flagler West Associates	LPCIMINELLI	Ewing Cole	2009
Collin County Community College	Collin County, Texas	Hunt Construction Group	PBK	2009
Orlando Int'l Airport Airside 3	Greater Orlando Aviation	Hensel Phelps	CT HSU & Assoc.	2009
Winstar Resort	N/A	Bovis Lend Lease	Leo A. Daly	2009
Dallas Cowboys Stadium	Dallas Cowboys	Manhattan Construction	HKS, Inc.	2009
T-Rex Restaurant	Landry's Restaurants, Inc.	Whiting-Turner Contracting	Cuningham Group	2008
The Yak & Yeti at Disney's Animal Kingdom	Walt Disney World	Whiting-Turner Contracting	Cuningham Group	2007
Seminole Hard Rock Hollywood High Limit	Seminole Tribe of Florida	Alliance Construction	Klai Juba	2007
Pointe Orlando	New Plan Excel Realty	Whiting-Turner	Beame Arch. Partners	2007
Bass Music Center	Oklahoma City University	Manhattan Construction	Beck Associates Architects	2006
Denton Hospital ICU	Columbia Medical Center	Lend Lease	Gould Turner Group PC	2006
FBI Headquarters Tampa	U.S. Government	Perry Company	Smallwood, Reynolds, Stewart	2006
Disney's Expedition Everest	Walt Disney Company	PCL Construction Services, Inc.	Walt Disney Imagineering	2006
LESS THAN \$ 1.0 MILLION				
HCA Lutz Freestanding Emergency Room	HCA	DDHG	Hereford Dooley Architects	2017
Osceola Reg. Med. Ctr. PEDS PICU	Osceola Reg. Med. Ctr.	Batten & Shaw, Inc.	TM Partners, PLLC	2016
Amalie Arena	Tampa Sports Authority	Mortensen Construction	Generator Studio	2015
Dunbar High School Addition	Lee County School District	Suffolk Construction	BSSW Architects	2014
The Inn on the Pond	Menorah Manor	Creative Contractors	Bessolo Design Group	2011
Pinch A Penny Headquarters	Pinch A Penny	Hardin Construction	Fleischman Garcia Architects	2011
Mosaic Florida Operations Center	Ryan Companies U.S., Inc.	Ryan Companies U.S., Inc.	William Jenson Architects	2010
Florida Hospital Health Village MOB	Adventist Health/Sunbelt	Brasfield & Gorrie	Hunton Brady Architects	2010
Transitions Optical Gemini Clean Room	Transitions Optical	Construction Services, Inc.	Collman & Karsky Architects, Inc.	2010